

Waldringfield Parish Plan

Shaping the future of Waldringfield



**Final Report
November 2015**



Golf Club



Baptist Chapel



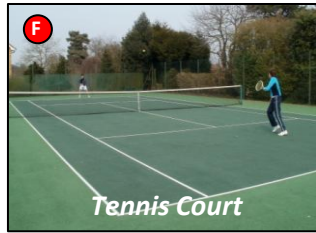
Village Hall



Primary School



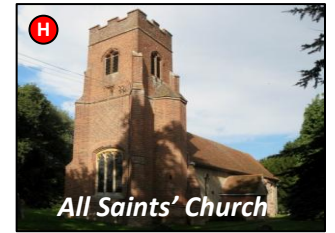
Playing Field



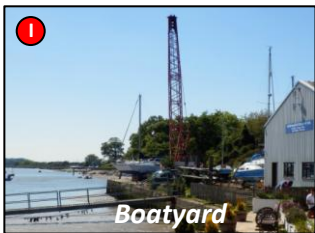
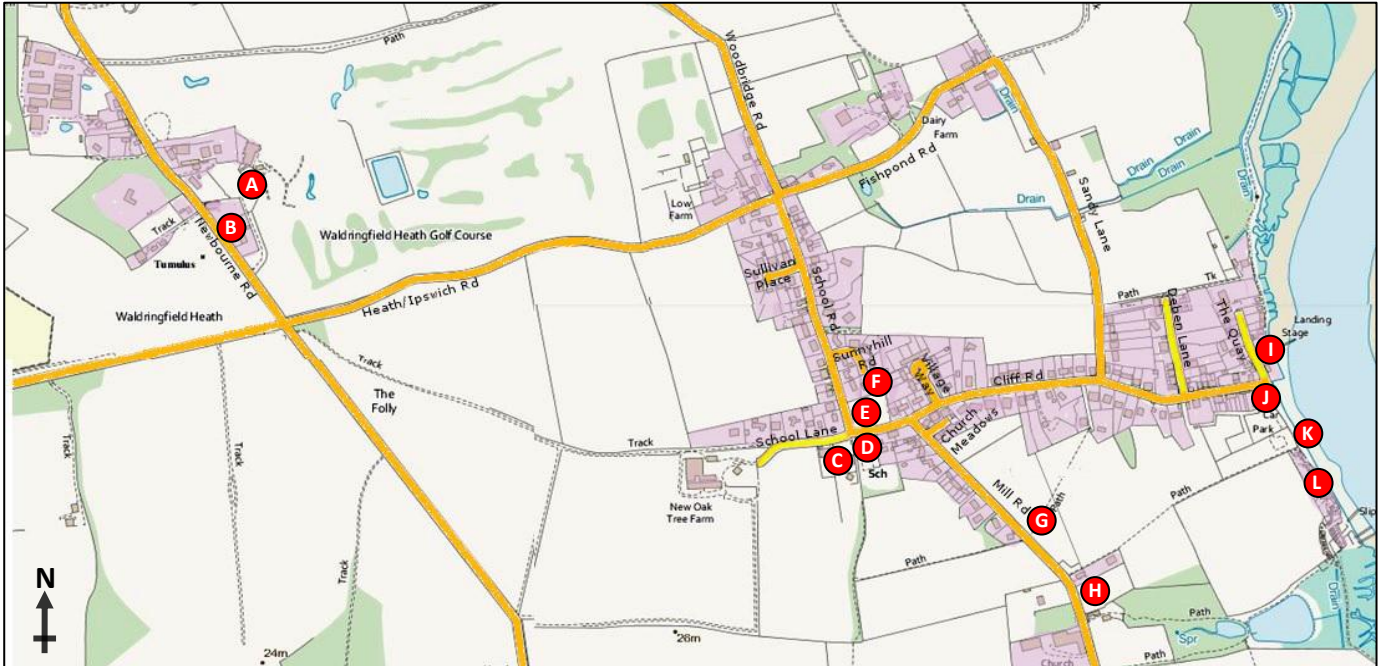
Tennis Court



Church Field



All Saints' Church



Boatyard



Pub



Beach



Sailing Club

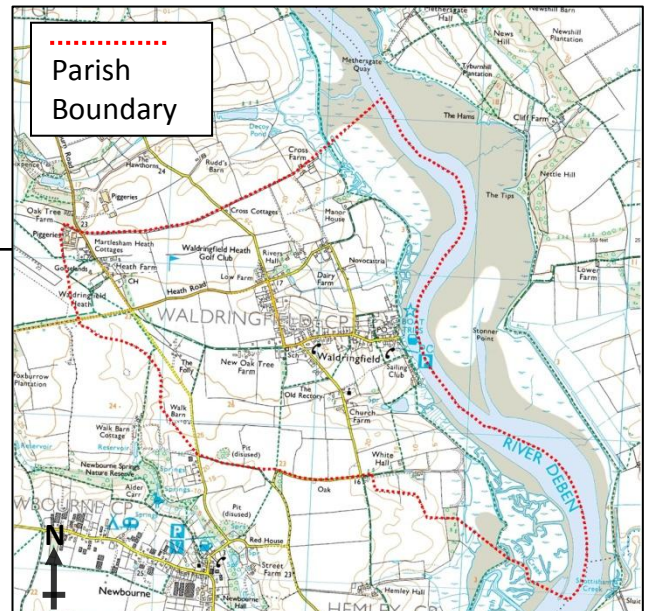
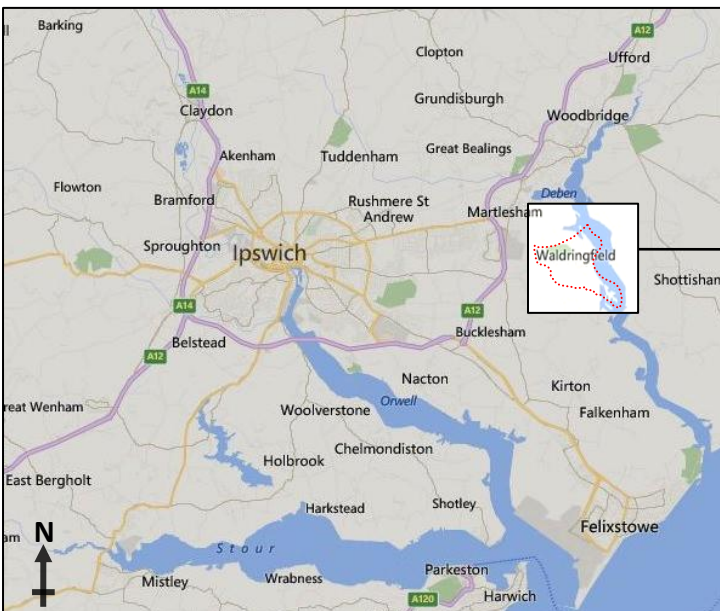


Table of Contents

A Portrait of Waldringfield	2
The Making of the Parish Plan.....	4
Data from the Survey	5
Housing.....	6
Road Safety and Highways	8
Transport.....	9
Community Safety and Wellbeing.....	10
Services and Utilities	11
Tourism and Visitor Facilities.....	12
Community Outside Spaces	13
Sport and Recreation.....	15
Social and Leisure	16
River and Foreshore	17
Environmental Protection.....	18
Telecommunications	20
Village Communications.....	21
Local Democracy	22
Appendix A - Chronology and Associated Documents	22
Appendix B - Action Plan.....	23
Appendix C - Glossary.....	25
Appendix D - Photo and Map Credits	25

Foreword by Patricia O'Brien (Suffolk County Councillor, Martlesham Division)

It gives me much pleasure to write the foreword to the Waldringfield Parish Plan.

I have been your county councillor for 14 years and, until May this year, your district councillor. Looking back, I am as impressed by Waldringfield today, as I was in 1999. Whilst much has changed in society, with ever-faster information technology and steady loss of English reserve, Waldringfield has embraced these changes whilst retaining its values, so well defined in the Parish Plan.

The Plan illustrates, both in words and pictures, the cares and interests of the villagers, whether it be for faster broadband, rebuilding of flood defences or the scope of activities. Issues such as increasing visitor numbers and the resulting pressure on the Deben Estuary and the village infrastructure are clearly at the forefront of residents' concerns.

The various stages of the Parish Plan – the survey, publication of results, draft action plan - have all been the subject of public consultation and engagement. This Plan is an authoritative community-planning document reflecting the wishes of residents and the needs of the Parish for the future.

I am very happy to commend the Plan and look forward to continuing to give my support to the Parish Council and residents in my role as county councillor.

Steering Group members:

Janet Elliot*	Chair
Rosalind Erskine	
Ian Kay*	IT and publishing

Chris Lyon
Bridget Rayner†
Betsy Reid
Colin Reid*
Alyson Videlo*

* Parish Councillor

† Parish Councillor (up to March 2015)



The project was funded by Waldringfield Parish Council through the SCC Locality Grant.

The Parish Council has adopted the Plan as the definitive community-planning document reflecting the wishes of the residents of the parish.

Copies of this report can be obtained from the Waldringfield Parish Clerk and can be viewed online at <http://waldringfield.onesuffolk.net/2015-parish-plan>

A Portrait of Waldringfield

Throughout the village's history the river has played an important role as a route for both goods and people. Today the river continues to be a significant asset and to play its part in the lives of residents, visitors and the wildlife it supports. The tidal estuary is a Special Protection Area, designated as a wetland site of international as well as national importance. The saltmarsh, inter-tidal mudflats and riverside grassland support many different species of plants, birds and mammals, and offer excellent conditions for waders and wildfowl including avocet, curlew, and brent geese. The river now has a good population of fish, attracting birds such as heron and little egret. Seals and otters have reappeared recently.

Dinghy and keelboat enthusiasts are also lured to the river, with the sailing club attracting many members and the boatyard offering pleasure cruises and boat trips. The Maybush attracts many visitors, and walkers can enjoy the footpaths throughout the surrounding Area of Outstanding Natural Beauty and along the river wall.



Parts of the river wall are seriously degraded and were damaged further during the December 2013 flood. The Waldringfield Flood Defence Group has successfully managed a programme of remedial works, part of which was to provide flood protection north of the village. The stability of the river wall and footpath has been improved whilst creating the foundations to transform Dairy Farm Marsh into a vibrant and sustainable

freshwater wildlife reserve.



Village Hall

Other assets within the parish include the village hall, All Saints Church (14th century Grade II* listed), Baptist Chapel, children's sports field and play space, tennis court and Church Field.

The Primary School is thriving and has a "good" Ofsted rating. The student roll has shown significant growth over the last few years and is currently (November 2015) around 100, although most of the children are drawn from across the wider community.



The school's kitchen garden

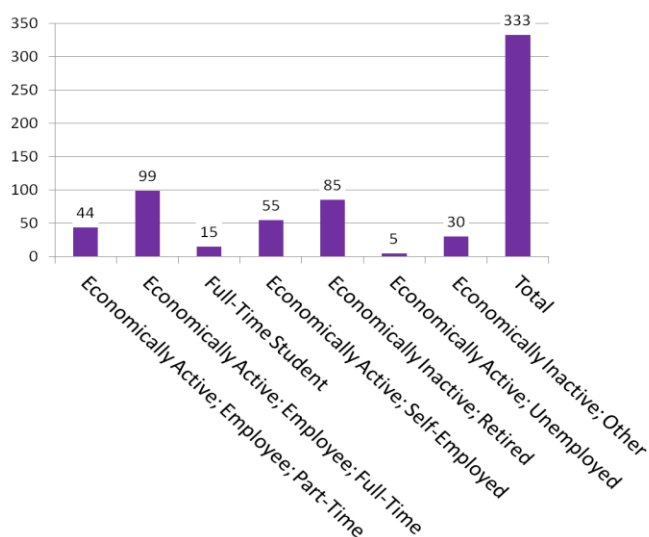
We are a small community (464 residents in the 2011 census) set within the Suffolk Coasts & Heaths AONB. The rural, riverside setting with relatively easy access to rail and road networks attracts a broad cross-section of residents. These include those who wish to bring up their family here, those who wish to retire here, those who wish to have second homes here as well as those who wish to live

here and commute to employment elsewhere. More than half the population has lived here for more than 16 years and a number of families have lived here for several generations.

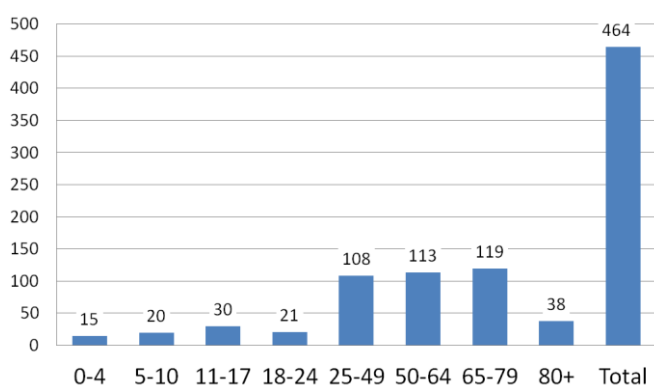
The most recent census (2011) provides the following information:

Occupation breakdown

(Residents aged 16-74)



Population by age in March 2011



The Suffolk Observatory has collated and analysed the data from the 2011 census by electoral divisions. Waldringfield is part of the Martlesham division, which also includes 12 of the villages around our area. The



following information is taken from the Suffolk Observatory analysis.

The age breakdown for the Martlesham division shows a higher than average proportion of people over the age of 50. The most common age group is 60-64 year olds, followed by 50-54 year olds. The number of people of retirement age looks set to increase markedly in the coming years. There is a much lower than average number of people of working age, particularly 20-39 year olds. Life expectancy in the division is very high for both men and women.

In early 2013 (February), around 1.3% of the working age population (males aged 16-64 and females aged 16-59) were unemployed and claiming Job Seekers Allowance. This is slightly below the district average and considerably below the county and national levels.



Yachtsman's service, conducted by the Dean of St. Edmundsbury

Martlesham division has an affluent ACORN profile, with almost three quarters of residents classified in the top quintile as "wealthy achievers". Just over a fifth of the population of the division is classified as "comfortably off". There is a small proportion of residents classified as "hard pressed" in this division, suggesting there are some pockets of lower levels of affluence.



The Making of the Parish Plan

The previous Parish Plan was published in 2004. It has informed Parish Council Policies and has given impetus to the formation of a variety of local interest groups. The village now faces new challenges and opportunities and the move towards localism means that it is important for us to have an up to date Parish Plan.

Supported by the Parish Council, a group of 8 volunteers formed the Parish Plan Steering Group to lead the process. The Parish Council provided the limited funding that was necessary and advice was given by Community Action Suffolk.



Village review meeting, 2012

We wanted the Plan to tackle issues that were important to the community, identify key facilities and services, set out the problems that need to be addressed and identify how the distinctive character and unique features of Waldringfield can be conserved. Public consultations were undertaken at key stages in the preparation process.

The first step was the 'Shape the future of Waldringfield' public consultation meeting, facilitated by Community Action Suffolk. The Steering Group then reviewed current Parish Council Policies and engaged with various groups and individuals in the community to gather their views and receive specialised input.

Using this information the steering group then compiled the survey questions, which were then divided into two sections.

Questions 1-5 asked for household responses and questions 6-58 asked for responses from individual household members from the age of 11+.

During the drafting process the survey was reviewed by a panel of residents to identify any ambiguities or bias. The final Survey was then delivered to every household in the parish in May 2014. 226 surveys were delivered, 147 were completed, a response rate of 65%.

4 people commented that they would have preferred to respond online. Subsequent documents were made available online and responses invited via email or hard copy.

The raw data was collated and the Results Report was delivered to every household for public consultation, culminating in a public meeting in January 2015. During this meeting, residents viewed displays containing all the survey results and comments. Residents were invited to identify any issues that had emerged where action should be taken and, if so, what that action should be and which group might take the action forward.

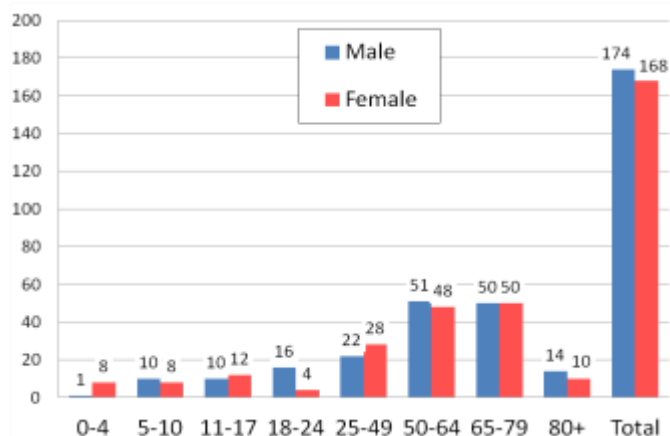


Survey Results meeting, 2015

Based on the information gathered through the survey and the consultations, an Issues & Action Plan was then published in March 2015 and made available for further public consultation. The information gathered throughout the process was then developed into the 2015 Parish Plan.

Data from the Survey

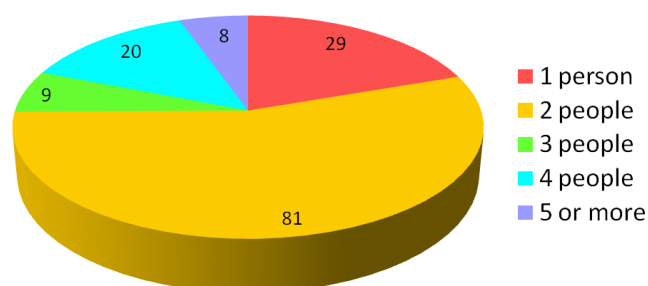
The survey was returned by 147 households comprising 342 residents, including those who were temporarily absent, across all age groups as follows:



Of these, a total of 293 respondents aged 11+ went on to complete the individual section of the survey. NB: some questions were not answered by all respondents.

Household sizes and Tenure

55% of households taking part in the survey are 2 person households and 18% live alone.



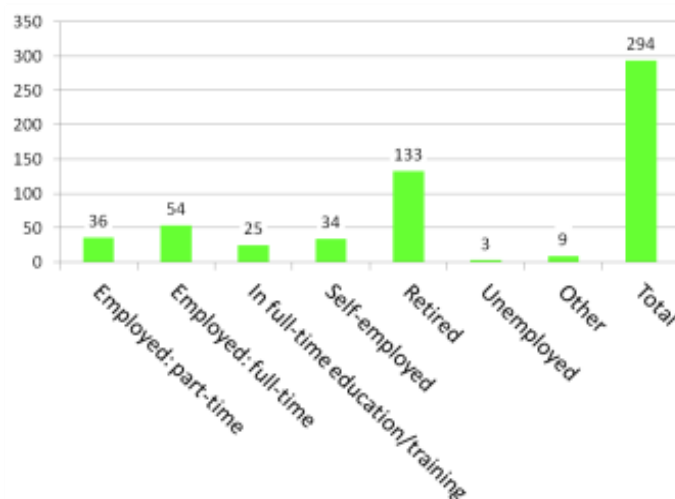
Of the households taking part, 85% are owner-occupiers, 9% are private tenants and 6% are housing association tenants.

7% of households said that Waldringfield was not their main home. More than 56% of respondents have lived in Waldringfield for more than 16 years.

Employment

There are some local employers in the parish, these include the Maybush, the boatyard, and the Fairway Committee. Other businesses include a building firm, garage, golf club, local farms, a number of business units at Seven Acres and several home-based enterprises and holiday lets. However, the

main sources of employment for residents are outside the village at centres such as Woodbridge, Ipswich and Martlesham, and some residents commute to London on a regular basis.



Note: some people ticked more than 1 box

Challenges and opportunities

The parish survey results indicate that Waldringfield continues to be an extremely active, sociable and welcoming village community. Residents have shown a willingness to adapt to change, whilst seeking to protect the very special qualities of our village and the surrounding countryside.

A variety of challenges were identified including:

- the impact of the 2000 new homes at Adastral Park
- increasing visitor pressure causing harm to the Deben SPA
- increasing traffic on the narrow roads and lanes
- inconsiderate parking on narrow roads and on verges
- the reduction of services such as public transport
- the diminishing number of smaller homes to rent or buy
- poor broadband and mobile phone coverage

All of these topics, and more, are covered in detail within the following pages of the 2015 Waldringfield Parish Plan.

Housing

The survey looked at two main elements:

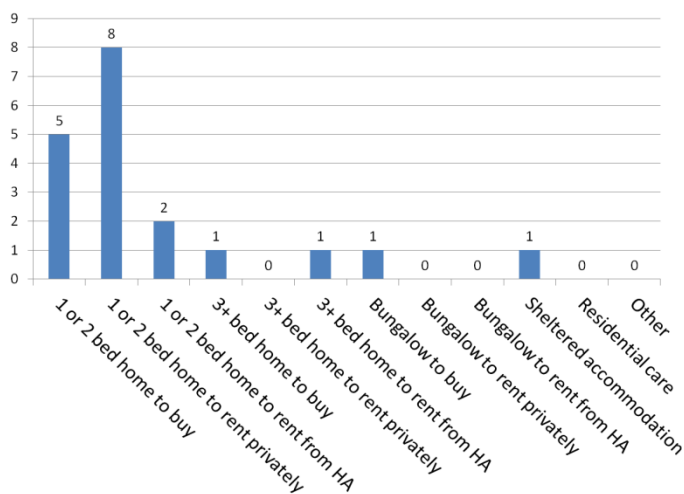
- i) Local housing need, and
- ii) The scale and location of any future development in the Parish

Local Housing Need

The *Suffolk Housing Survey* was conducted in 2014 by SCC and all 7 District and Borough Local Authorities in Suffolk. This was a very detailed 12 page housing needs survey which included our area.

The Parish Plan Survey sought to identify housing needs at a local level as expressed by current residents. The survey focussed on individuals rather than households and therefore does not translate directly into the number of additional houses needed. The results do however show that where there is a need, it is for 1 or 2 bed homes to rent or buy.

What type of accommodation will you need?



Some of the 13 individuals indicating a housing need within 5 years and wishing to remain in Waldringfield ticked more than 1 box in this question.

Recent new developments in the Parish have contained only 4 and 5 bedroom houses.

Also, some of the existing smaller homes have been substantially increased in size, so reducing the stock of smaller homes.

“Must be affordable to draw in young families”

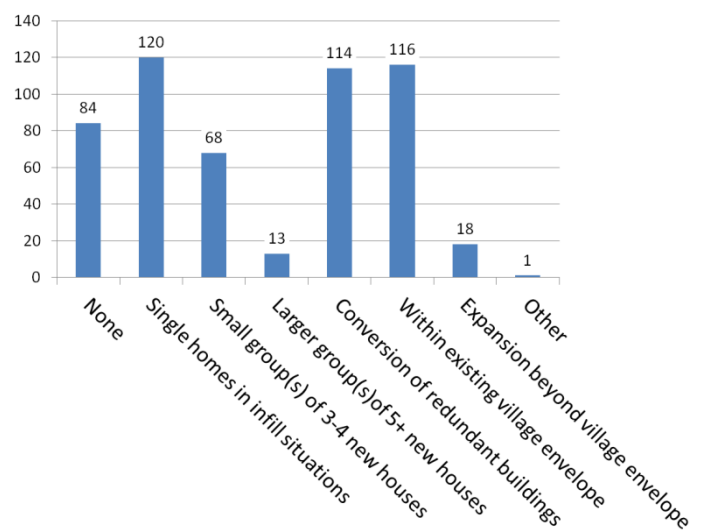
Scale and location of any future development in the Parish

As part of its Core Strategy SCDC has identified the area to the south and east of BT Adastral Park for an allocation of 2000 dwellings, including approximately 650 affordable homes. An outline planning application has been submitted but has not yet been determined by SCDC.



Site of BT planning application

If the Adastral Park development goes ahead, 33.1% of the 254 survey respondents wished to have no development within Waldringfield. (Slightly higher than in the 2004 Parish Plan Survey) If there is to be development in Waldringfield the preferred types are conversion of redundant buildings and single homes in infill situations.

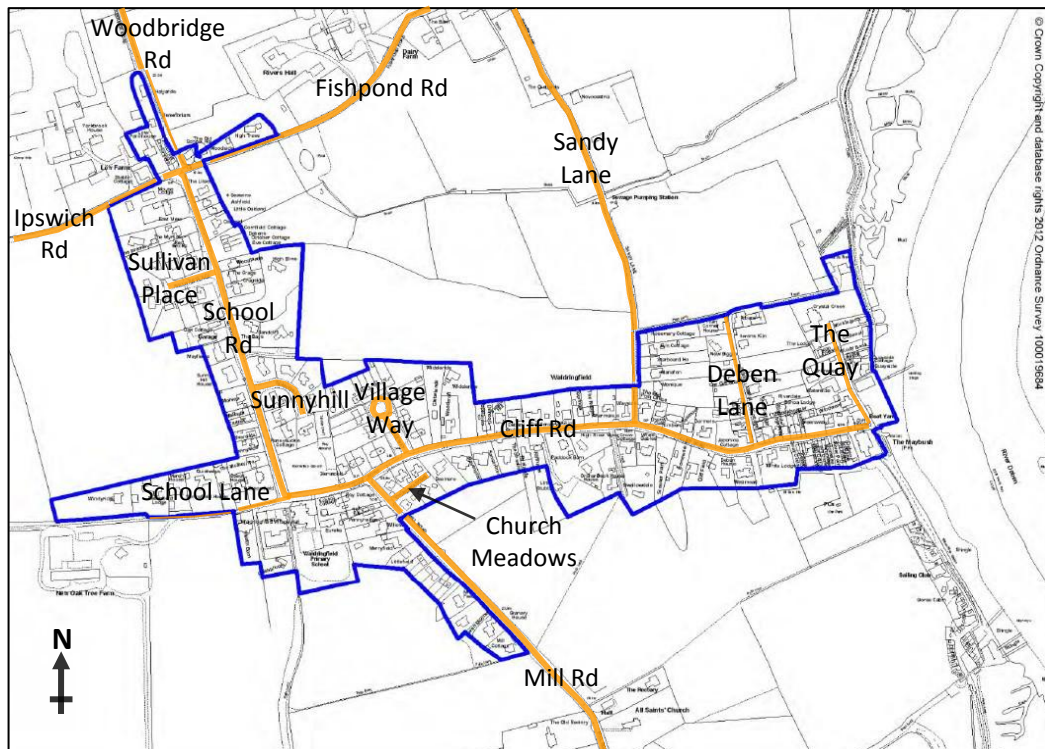


45.7% wished any development to be within the existing village envelope, 7.1% were in favour of expanding the envelope.

This has recently been the subject of a SCDC public consultation where some very small amendments to the envelope were proposed, with which the PC agreed.



In most places the village envelope runs along the boundary between residential properties and fields



Village envelope 2015 (outlined in blue)

Recommendations for Action

Retain existing WPC Planning Policies.

Oppose any planning applications that would have a negative impact on the AONB and Deben SPA.

Promote, where appropriate, planning applications for 1 and 2 bed properties and encourage retention of current 1 and 2 bed properties.

Continue ongoing discussions with SCDC to adopt as supplementary planning documents (SPDs), relevant Parish Council policies and

properly constructed design statements. These SPDs would then be a material consideration when SCDC is determining future planning applications within Waldringfield.

Continue ongoing discussions with SCDC to ensure that the measures for progressing and monitoring the development at Adastral Park described in the Core Strategy SP19 para 4.15 and SP20 are implemented.

Continue discussions on the pros and cons of a Neighbourhood Plan.

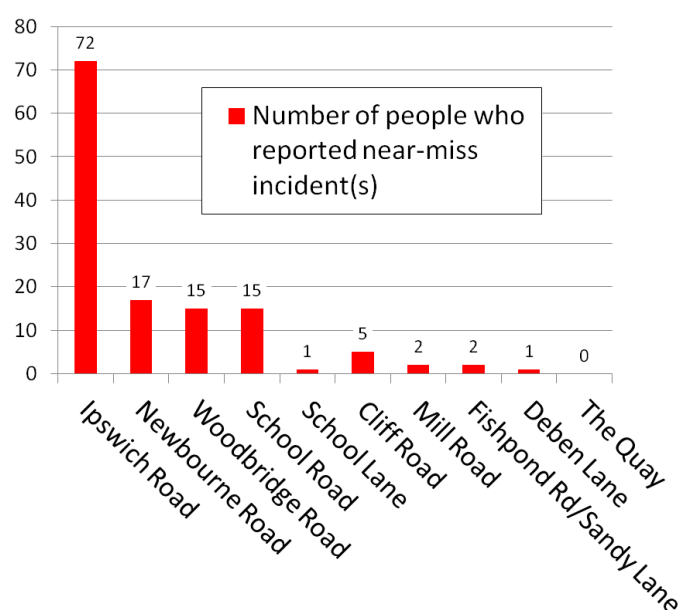
Road Safety and Highways

The roads in and around Waldringfield are narrow, with significant bends, most have no pavements. Perceived danger on the roads was an issue highlighted by 47% of those attending the initial village meeting in 2012.

26% of the 293 respondents stated that they had been adversely affected by speeding in the Parish.

11 people stated that they had been involved in a road traffic accident (actual collision) in the years 2012–14.

In the survey 130 people reported that they had had near-miss incidents, of which 72 had experienced these incidents on Ipswich/Heath Rd.



Skid marks on Ipswich/Heath Road

Comments suggest a variety of reasons – the following are the most frequently expressed:

- i) Overhanging hedges and trees forcing larger vehicles into centre of road.
- ii) Vehicles travelling faster than appropriate for the conditions of the road (restricted vision at bends and narrow road width) on de-restricted roads such as Ipswich/Heath Rd and Woodbridge Rd.
- iii) Unclear signage on Newbourne Rd at crossroads with Ipswich Rd.
- iv) Lack of pavement or pedestrian refuge on most of the roads in the Parish including the junction of Fishpond and School Rd.

Recommendations for Action

Liaise with police regarding running speed checks/cameras on all roads with 30 and 20 mph limits.

Liaise with County Council, Highways & Police to:

- ensure that land owners keep the hedges and tree line clear of the boundaries of the road
- increase pedestrian safety on roads with no pavements or refuge
- consider a change of road surface, colour or texture, when entering the 30 mph limit
- introduce a vehicle size/weight restriction
- ensure adequate signage is maintained

Ipswich/Heath Rd only

Liaise with the appropriate authorities to recommend that a speed restriction should be introduced between crossroads and village entrance to reflect the road conditions. Liaise with golf club regarding reducing the number of balls being hit into the road.

Newbourne Rd only

Approaching the crossroads, liaise with the appropriate authorities as above to move de-restriction sign from just before the crossroads to just after the crossroads.

Other road hazards

HGVs relying on Satnav and using Woodbridge Rd or Fishpond Rd to enter the village.

HGVs reversing up Cliff Rd having not realised that it is a 'No Through Road' without turning places.



A traffic jam on Cliff Road

Roadside and on-verge parking can cause additional hazards for other road users, particularly pedestrians. The main problem areas are around the school, the Maybush and in Village Way.

“Cars parked on verges opposite the school obstruct the view round the bend”

Recommendations for Action

Liaise with appropriate authorities re signage for no through road.

Investigate creating raised beds on worst affected verges e.g. retained by sleepers or similar, to discourage vehicles from mounting/parking on the verges.

Monitor alternative drop off points for the school. Walking buses etc are already being trialled by school and supported by police and parents.

Monitor the planned road improvement works to Village Way.

Investigate provision of school bus for Primary School



Parking on the verges damages them and obscures the view of vehicles coming round the corner

Transport

Many rural villages are poorly served by public transport and Waldringfield is no exception. There is a very limited bus service to Ipswich, Woodbridge and Felixstowe, but partly because the service is so limited it attracts very few passengers. This has an impact across all generations including young people wishing to attend extra-curricular and social activities. The lack of passengers means that the service is likely to be reduced even further as it becomes unviable.

“Buses aren't frequent enough to be helpful”

Recommendations for Action

Investigate alternatives to the current scheduled bus service, including Suffolk Link, a demand responsive minibus service.

Investigate facilitating an informal group to operate a lift-share scheme.

Seek to introduce those households who would consider sharing the ownership & running of a car to other interested households.

Community Safety and Wellbeing

On rare occasions Waldringfield may experience flooding, major road accident, storm damage or other emergency situations. The most recent incident was the flooding on The Quay in December 2013.



Flooding receding on The Quay, December 2013

The properties on The Quay are now protected by a new flood defence wall thanks to the fund raising and management by WFDG.



Flood defence wall

The Parish Council has updated its Emergency Resilience Plan. It is available on the village website, or on request from the Parish Clerk. A brief Aide Memoire/ Emergency Directory has been delivered to every household and this is also available on the Waldringfield website. Both documents include details of the Automatic Emergency Defibrillator (AED) now located outside the Maybush. No medical knowledge or training is required to use this device but, in the event of someone having a medical emergency, it is accessible only after dialling 999 and

obtaining a code from the operator.

Waldringfield has a very low level of crime and anti-social behaviour. This is supported by the crime report provided by the police to WPC each month. Nonetheless 24% of respondents rated the visible presence of the police as poor. Issues of concern included speeding (covered in the Road Safety section), mud on the road, dog fouling and fly tipping.

Some people indicated that they would appreciate some help with day-to-day tasks. The numbers are quite low, although the level of individual need may be significant. 11 people indicated they need help doing small jobs in the home and 12 need help with computing/using the internet. 25 people said they would make use of a village Good Neighbour Scheme if one were available. 100 people said they would offer help.

“Everybody pays for flytipping on the periphery of the village”

Recommendations for Action

Regularly update the information contained in the Emergency Resilience Plan.

Increase public awareness of Neighbourhood Watch and the police liaison with WPC.

Liaise with farmers re minimising the amount of mud being deposited on the roads by farm vehicles and the positioning of irrigation sprayers.

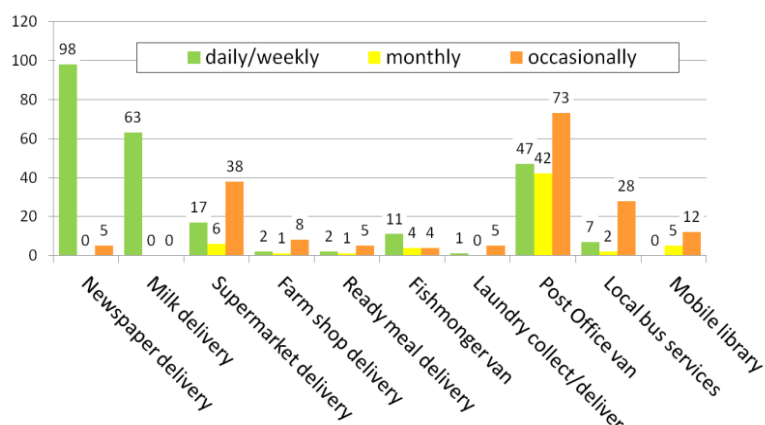
Provide ongoing publicity to raise awareness of the issue of dog fouling. Seek to establish an action group of dog owners to recommend how to reduce the problem and consider the location and number of bins etc.

Encourage informal good neighbour connections through a “get to know your neighbour day”. Seek to publicise the offers of help to residents.

Computing needs might well be served via the proposed computer group/classes.

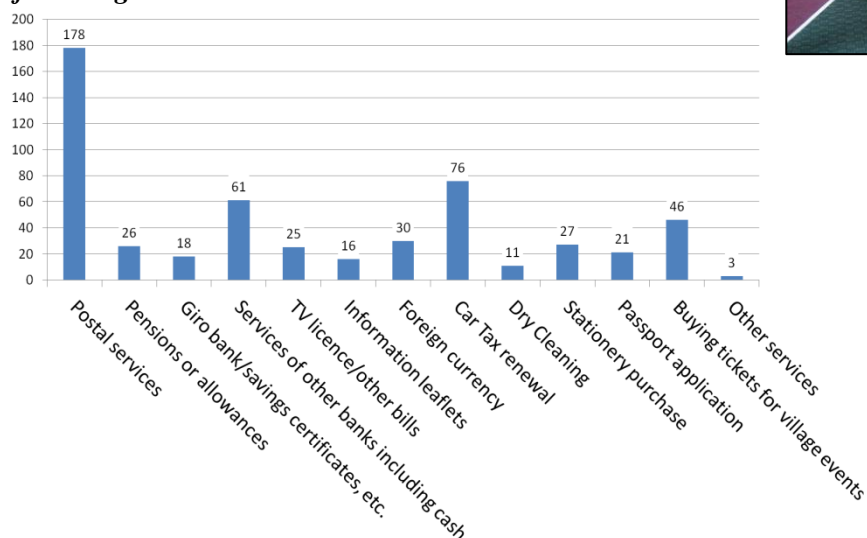
Services and Utilities

Although we no longer have a village shop, Waldringfield is served by a wide range of delivery and mobile services which are highly valued by those who use them. However, the survey results indicated that there is a limited awareness of what is available and how to access them.



63% of respondents used the mobile PO van but many were not aware of the range of products available.

Do you use the mobile Post Office van for any of the following?



Recommendations for Action

Publish a list of all services/amenities within the Parish as well as the mobile services and circulate to all households and to new residents as part of a 'welcome pack'.

Pass survey findings to the commercial operators and encourage them to proactively advertise their services.

More than 70% of respondents rated the majority of the utilities and other services as good.



Mobile library



Mobile Post Office

“A valuable service given no nearby post office”

Tourism and Visitor Facilities

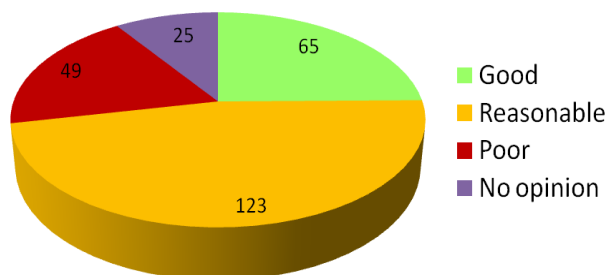
Waldringfield attracts a large number of visitors and holidaymakers, many of whom bring valuable revenue to local businesses. The Maybush is a popular destination and the sailing club has more than 700 members. Others come to enjoy the beach and riverside paths. This level of activity results in a high volume of traffic, for which our roads are ill equipped.

The number of visitors is likely to increase significantly if the BT development goes ahead, and many of these visitors are likely to travel by bike or foot.

An increase in visitor numbers is likely to have a negative impact on the Deben Estuary SPA as well as on the amenity of residents.

More than 70% of respondents rated current visitor facilities as good or reasonable.

Waldringfield attracts many visitors. How do you rate the facilities provided for them?



Suggestions for improvements to facilities included: provision of public toilets, particularly near the beach (14 people), improved car parking (8 people), and provision of a village shop (7 people).

“Public toilets needed in beach/car park area”

“It’s a pity there is no tearoom or shop or bikes/boats for hire”



The beach is a major attraction

Recommendations for Action

Recommend that the Parish Council should seek to protect Waldringfield from becoming even more of a ‘honey-pot’ destination. Its policy should be to continue to welcome visitors at the current level but not actively encourage additional, particularly car-borne, visitors.

Investigate provision and location of bicycle parking rack.

Examine again the feasibility of installing a public toilet for the use of residents as well as visitors and liaise with Maybush re members of the public using its facilities.



River cruises are a popular visitor attraction

Community Outside Spaces

Public footpaths and bridleways

Waldringfield lies within the Suffolk Coast & Heaths AONB and benefits from a connected system of footpaths and bridleways throughout the Parish and beyond. 83% of respondents stated that access to the surrounding countryside was one of the most important aspects of living in Waldringfield.

More than 90% of respondents said they use the local footpaths and bridleways, although some commented that the footpaths are sometimes overgrown.



Footpath on river wall

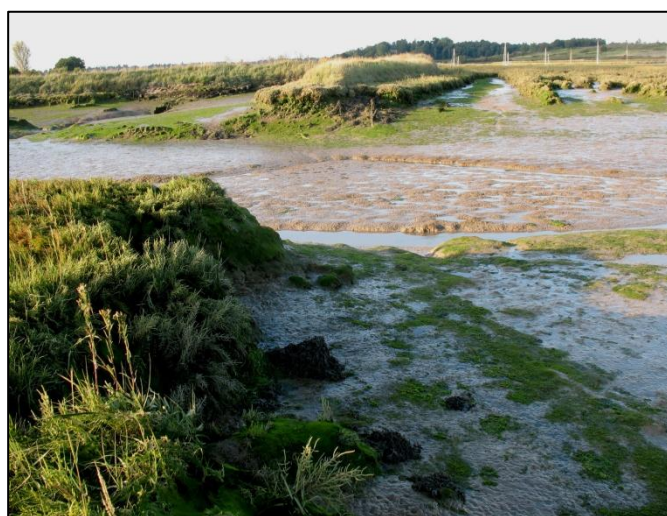


One of Waldringfield's many public footpaths

The public ROW/footpath along the riverside to Woodbridge and Felixstowe has been breached in several places making it impossible to walk to Woodbridge or Felixstowe without diverting from the footpath onto the very narrow country roads, with the inherent danger from vehicles.

82% of respondents said they were in favour of rerouting the riverside footpath around the breaks, in order to provide again a continuous footpath to Woodbridge and Felixstowe, 7% were against.

“It [a continuous footpath to Woodbridge] would be fantastic”



Breach in river wall, roughly 1 mile north of Waldringfield

Recommendations for Action

WPC to consider more frequent grass cutting alongside the existing footpaths.

Liaise with appropriate bodies, e.g. SCDC, DEP, Ramblers Association, local landowners, to investigate all options in order to facilitate the provision of a continuous footpath away from any traffic.

Other outdoor leisure spaces

In addition to access to the natural landscape, Waldringfield benefits from a number of outdoor leisure areas. These include the children's playing field, tennis court and Church Field as well as a cricket ground and golf club.



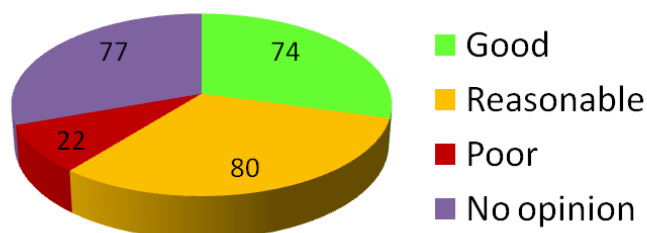
Church Field in the spring

The survey results showed that Church Field is an asset that is much appreciated. It is used frequently for a variety of pastimes, the most popular being walking, dog walking, bird/wildlife watching and quiet contemplation. The field was given to the Parish by the late Dr. Tom Waller in 2004 and is managed by a team of Trustees.

“Church Field is wonderful”

The children's playing field is owned and managed by the Parish Council. Some of the equipment was installed in the 1990s. The parallel bars, train and stepping snake are more recent additions. The equipment and the surrounding areas are subject to regular safety checks and an annual safety audit. 61% of respondents rated the facilities as good or reasonable, 9% as poor. 19 comments were received, which included suggestions for improvements.

How do you rate the facilities/equipment provided on the existing children's playing field?



The children's playing field



A village event on the children's playing field

Recommendations for Action

Form a working group, to include parents and children who might use the playing field, to examine possible improvements, including a redesign and to secure appropriate funding.

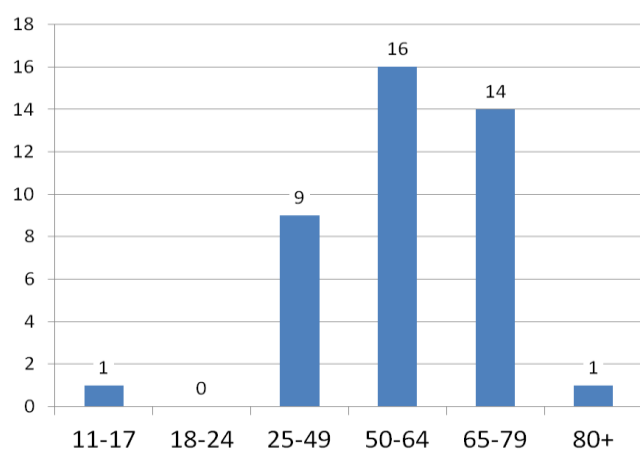
Sport and Recreation

There is a wide range of sports and fitness facilities within the Parish, catering for all ages. A selection of these include badminton, youth club, tennis, golf, sailing, swimming, pilates, yoga, football, basketball and walking and cycling groups.

The results of the survey indicate that 14% of respondents (41 people) would take part in additional sport or fitness activities if made available.

The age breakdown was as follows:

Would you take part in new sports/keep fit activities if available in Waldringfield?



Of the activities suggested, keep-fit, zumba and dancing were the most popular options.

Recommendations for Action

Investigate which of the suggested new activities can be taken forward.



Swimming in the river



Saturday football on Church Field



Tennis



The Maybush versus the Fox at Waldringfield Cricket Club

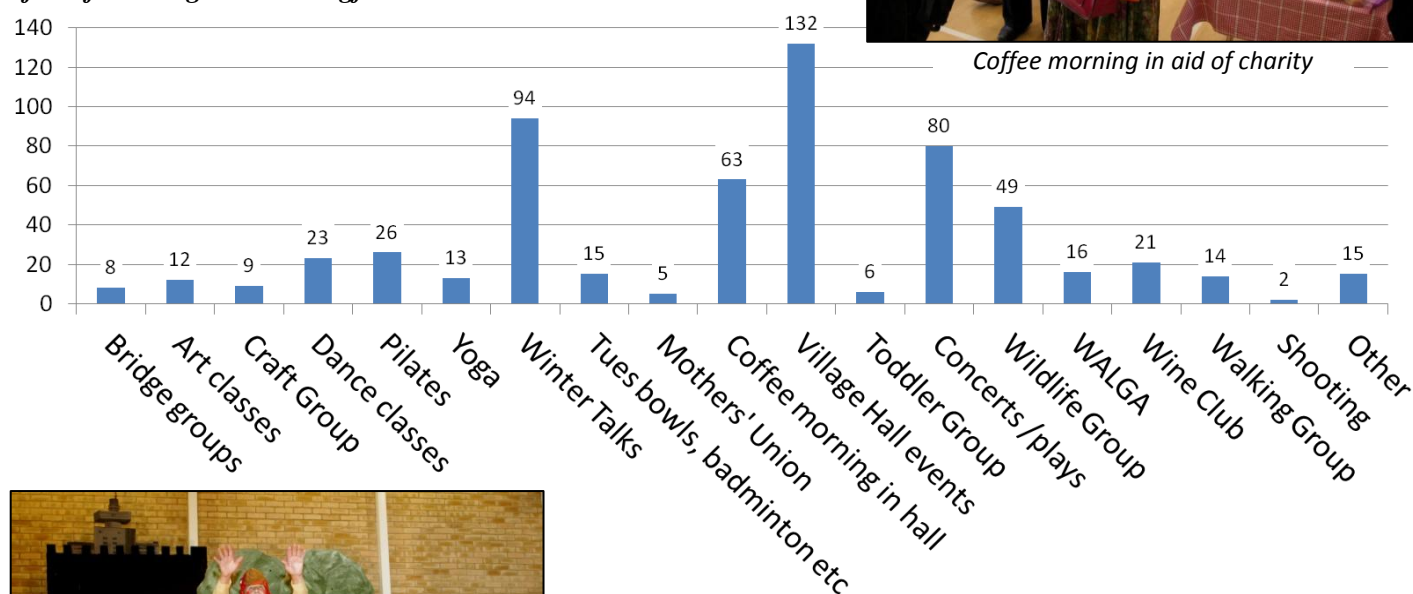


Badminton in the Village Hall

Social and Leisure

There is a full calendar of events and activities in the Village Hall and the survey results showed that these were well attended. Interest was shown in some additional activities, in particular 103 people said they would attend films at the village hall, 60 would attend U3A courses, 39 would attend a computer club/course and 36 a book club.

Do you take part in, or have you recently attended, any of the following in Waldringfield?



“More quiz nights please, great fun”



Harvest suppers



Art class

Recommendations for Action

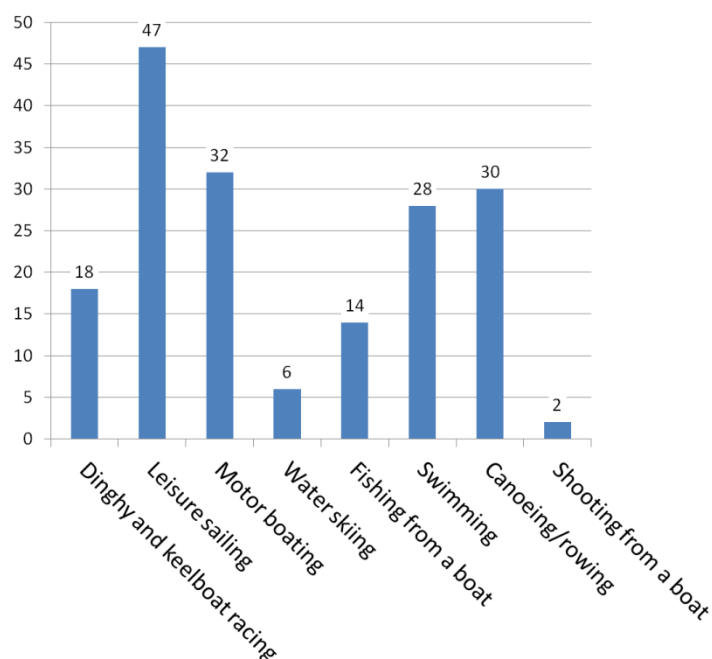
Investigate which of the suggested new activities can be taken forward.



River and Foreshore

The River Deben is an important asset for residents and visitors. 92% of respondents said that it was one of the most important attractions of living in Waldringfield.

27% of respondents said they took part in activities on the water. The most popular were boat related. 28 people said they swam regularly and a further 21 people ticked swimming without indicating how often.



Family fun on the beach

250 out of the 293 respondents said they use the riverside and beach, mainly for walking and general relaxation. 92 people walk with dogs and 89 take part in children's beach activities.

At holiday times and at weekends the river and the beach can become crowded and this can create some issues.

Rubbish and hazardous items such as crabbing hooks left on the beach were highlighted by 63 people and 50 people reported experiencing speeding on the river, 1 of whom said it had not caused a problem.

Recommendations for Action

Recognise the needs of swimmers as well as other users, when looking at river related policies/activities.

Improve and maintain rubbish bin facility on beach.

Review signage re litter, dog fouling and crabbing hooks.

Refer all survey findings to Fairway Committee.

Dinghy racing on the river



Environmental Protection

The Deben SPA

The Deben Estuary is a Special Protection Area, designated as a wetland site of international as well as national importance. It is a Site of Special Scientific Interest and has Ramsar status. It is described as a “sheltered estuary with areas of saltmarsh and intertidal mudflats displaying the most complete range of saltmarsh community types in Britain. The site supports nationally and internationally important flora and fauna”.



Dark bellied brent geese flying over the River Deben

Because it is on our doorstep it is perhaps easy to take this amazing environment for granted. Nonetheless the survey results show that 44% of respondents wish to see Waldringfield play its part in protecting the estuary and the saltmarsh in particular (the most supported of all the environmental initiatives suggested in the survey).



The saltmarsh is a fragile habitat

Quite separately, the WFDG has secured funding of nearly £1million. The first stage of the project, the erection of a floodwall to

protect properties on The Quay, has been completed. The second stage, to raise and strengthen the river wall (with its much valued footpath) from Swans Nest towards Manor House path, and to establish a freshwater nature reserve, has very recently been completed.

Although funding for these two stages has been raised, more will be needed to improve the saltmarsh, which plays an important role in helping to reduce erosion of the river wall.

52% of respondents identified the housing development at BT as presenting the greatest challenge to Waldringfield, in particular its likely adverse effect on the Deben SPA.

Recommendations for Action

WPC has offered to support the project to improve the saltmarsh in any way it can within its very limited financial resources.

Ongoing co-operation with the AONB, DEP, WWG, WFDG.

Ensure that the environmental issues are reflected in Parish Council policies.

Ongoing discussions with SCDC to ensure that the measures required under the Core Strategy SP20 are implemented.

Ongoing monitoring of implementation and effectiveness of mitigation measures required if the BT development goes ahead.

Ongoing monitoring of visitor numbers.



The Deben Estuary attracts many migrating birds

Other environmental matters

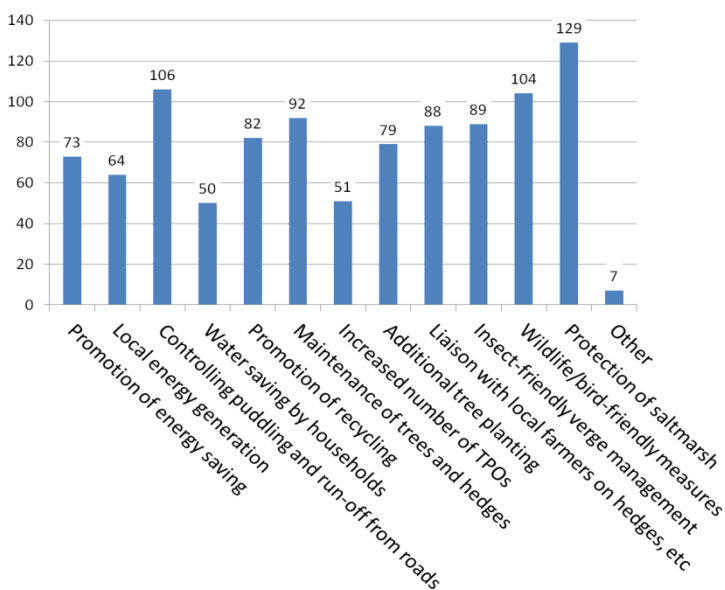
Other environmental issues receiving high levels of support in the survey results include controlling puddling and run-off from roads, and wildlife/bird-friendly measures. 64 people supported the idea of local energy generation and 73 the promotion of energy saving.



Puddling at the crossroads

35% of survey respondents would use one or more of the suggested gardening and wildlife related amenities if available. Of these the most popular included a community composting site, community orchard, allotments and an equipment-sharing scheme.

Would you wish to have addressed within the village any of the following environmental issues?



A community composting site and a community orchard would require suitable land to become available, and in the case of the composting site, a significant number of volunteers would be needed to run it. Action is deferred at present.

30 people responding to the survey said that they would make use of an allotment if one were available. If there is a demand for allotments the Parish Council has a duty to seek to facilitate this.



Apple Day with WALGA's community apple press



Cordon apples in Village Way, part of the Scattered Orchard project.



Spring bulb planting, part of the Village Verges project. (The results can be seen on the front cover, top left.)

Recommendations for Action

Investigate energy initiatives that have been successful in similar villages and consider what might be appropriate in Waldringfield.

Residents wishing to rent an allotment can write to the Parish Council, individually or through WALGA, to register their requirement. Residents who have suitable land that they would consider renting to the Parish Council for use as allotments can write to the Parish Council accordingly.

Telecommunications

Poor broadband speeds were a major issue for most residents. The number rating broadband speed as good for any of the functions was very low. The email function scored the highest but even then only 19% of respondents rated email as “good”.

However, since the survey the fibre optics box opposite the BT exchange has been brought into service, and broadband customers can now upgrade. The broadband speed is still affected by the distance of the house from the exchange, but at the time of writing (November 2015) there is a vast improvement for people living close to the exchange. For those living further away, such as on the Heath, where several businesses are located, broadband speeds remain very poor.



Waldringfield's two phone boxes

“Satellite is the only viable [TV] reception on Sandy Lane”



Fibre optics cabinets

Mobile phone signals were rated even more poorly. Only 8% of respondents rated their mobile signal, across a range of network providers, as “good”. In some other black-spot areas of the country mobile network providers have agreed to share a tower. If a suitable location for this type of tower could be found in Waldringfield the signal for all users would be greatly improved.

Recommendations for Action

Liaise with SCC and press BT, possibly via local MP, to make high speed broadband fully available to residents in all locations in the Parish as a matter of urgency.

Investigate, with the help of local expertise, the options with network providers, including the possibility of providing a ‘joint’ mobile phone tower.

Use these results as evidence of lack of mobile coverage should the village telephone boxes again come under threat of removal.

“Very bad [mobile phone] reception, almost non-existent”

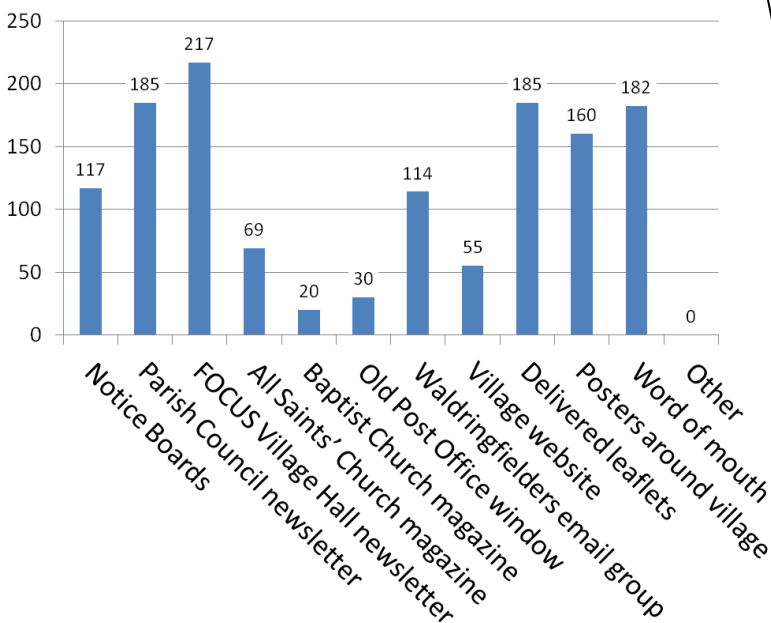


Nearest mobile phone masts (as of 2015)

Village Communications

The most frequently used medium for residents to obtain information is paper, including the Focus Newsletter, the PC Newsletter and delivered leaflets. Fewer than half of the respondents used the Waldringfielders email group (the group currently has 234 subscribers, although not all live in the parish). 20% used the village website. There does not appear to be any correlation between media type and age groups. Comments included concerns that Waldringfielders had moved away from its original remit, for which it is highly valued.

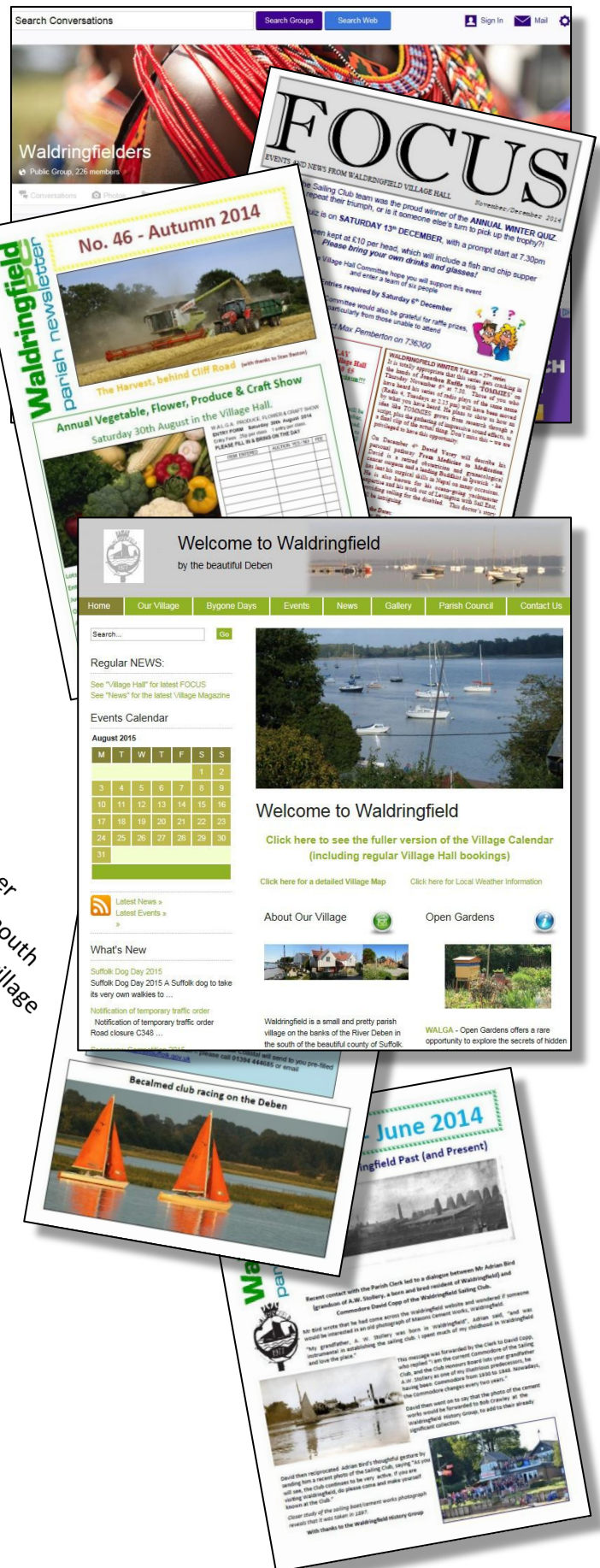
The numbers using Waldringfielders and the village website were marginally higher in response to the specific question on these facilities, but still less than 50%.



Recommendations for Action

Publicise content of the Waldringfield website and how to access the site.

Discussions are underway with the current owner of Waldringfielders email group to consider options regarding possible changes to the management, and then to actively promote the email group to attract new subscribers and increase coverage.



Local Democracy

19% of respondents had attended a monthly Parish Council Meeting in the previous 2 years. 26% had attended a Parish Council Briefing and 21% an Annual Parish Meeting.

The survey asked respondents to rate the effectiveness of the Parish Council. It is difficult to draw meaningful conclusions from the results.

Many people rated the Parish Council as "good".

However, in most categories, a greater number of people ticked the "no opinion" box. Some people were not aware that agendas are currently posted on the PC notice boards and the Waldringfield website, and that minutes (including a



Parish Council notice board

financial report) are published after each meeting and are posted on the Waldringfield website.

Recommendations for Action

Encourage greater engagement with residents.

Prior to each meeting, encourage attendance by posting a link to the agenda on Waldringfielders, so that residents can more readily see what topics are going to be discussed.

After each meeting, post a link on Waldringfielders to the minutes and financial reports for easier access to this information and to raise awareness.

Establish 'special interest' groups to include residents who use or have a particular interest in a topic/facility.

Include in the Parish Newsletter occasional updates on the activities and responsibilities of the Parish Council.

“The agenda should be given out on Waldringfielders”

Appendix A - Chronology and Associated Documents

Paper copies of all the Parish Plan documents can be obtained by request from the Parish Clerk or can be viewed online at the *Parish Plan homepage*:

<http://waldringfield.onesuffolk.net/2015-parish-plan>

Document Name and Chronology
Waldringfield Parish Plan October 2004
Waldringfield Parish Council Policies 2007 - Present
Waldringfield Village Review Public Meeting Report January 2012
2011 census data for Martlesham Electoral Division, published 2013 (Suffolk Observatory)
2011 census data for Waldringfield, published 2013
Waldringfield Parish Plan Survey Delivered to all households May 2014 Completed July 2014
Waldringfield Parish Plan Survey Results January 2015 Public consultation from 4/01/15 Public consultation meeting 29/01/15
Waldringfield Parish Plan Survey Comments January 2015 Public consultation from 4/01/15 Public consultation meeting 29/01/15
Waldringfield Parish Plan Action Plan March 2015 Public Consultation from 21/03/15
Waldringfield Parish Plan November 2015

Appendix B - Action Plan

Delivering the Plan

The Parish Council has overall responsibility for delivery of the Plan but many actions will rely on members of the community to take them forward. It is recommended that the Parish Council undertakes a review of all its current policies in the light of the information contained in the Plan and the relevant policies in SCDC's core strategy. It is recommended that an annual review of the progress of the delivery of the actions is undertaken and suggest the annual Parish Meeting is an ideal opportunity for such a review.

Some of the actions will require funding.

Establishing what funds are required and securing such funding will be a critical element of the delivery process. Where the actions fall within the remit of other bodies such as SCDC, SCC, DEP etc there will need to be clear communication about how such actions are carried forward.

It is recommended that the Parish Council seeks to have this Plan adopted by SCDC as a supplementary planning document.

The table below summarises who will take forward the actions included in the Plan. This is not a definitive list and will be capable of amendment after each review and subsequent public consultation.

Waldringfield Parish Plan Action Plan Summary (November 2015)

Plan page number	Topic and Action Summary	Lead	Partners	Level of Priority Importance/Urgency
7	Housing – all actions	Waldringfield Parish Council	SCDC, DEP, NE Professional bodies as appropriate	Important & ongoing
8	Road Safety – all actions	Waldringfield Parish Council	volunteer road safety group	Important & urgent
9	Other road hazards (a) raised beds on verges (b) School related parking (c) Village Way road works	Waldringfield Parish Council	(a) WALGA (b) Primary School (c) SCC ward councillor	(a) Medium & ongoing (b) Medium & ongoing (c) Important & urgent
9	Transport (a) Bus service (b) lift share (c) car share	Waldringfield Parish Council	(a) n/a (b) & (c) members of the community wishing to lift share or share car ownership	(a) Medium & medium (b) Medium & low (c) Medium & low
10	Community Safety & Wellbeing (a) update resilience plan (b) raise awareness of neighbourhood watch (c) reduce mud on roads (d) reduce dog fouling (e) improve good neighbour connections	Waldringfield Parish Council on all actions	(a) community to notify changes (b) n/a (c) include in road safety group remit (d) volunteer group of dog owners (e) volunteer group to facilitate actions	(a) Important & ongoing (b) Medium & medium (c) Medium & medium (d) Important & urgent (e) Important & low
11	Services and Utilities all actions	Waldringfield Parish Council	Volunteer group to facilitate actions	Medium & low
12	Tourism and Visitor Facilities all actions	Waldringfield Parish Council	New working party	Important & ongoing

13	Community Outside spaces Footpaths & bridleways (a) maintenance of existing footpaths (b) rerouting of ROW/footpath to Woodbridge & Felixstowe	Waldringfield Parish Council	(a) external contractor (b) new working party	(a) Important & ongoing (b) Important & ongoing
14	Community Outside spaces Other outdoor leisure spaces	Waldringfield Parish Council	New working group to include parents & children	Important & medium
15	Sport and Recreation Investigate provision of new activities	Waldringfield Parish Council	Village Hall Committee & managers of outside spaces	Medium & low
16	Social and Leisure Investigate provision of new activities	Village Hall Committee	Volunteers to take activities forward	Medium & medium
17	River and Foreshore (a) improve rubbish bin enclosure on beach (b) remaining actions	Waldringfield Parish Council – all actions	(a) external contractor (b) other actions: Fairway Committee Waldringfield Sailing Club and volunteers	(a) Important & ongoing (b) Medium & medium
18	Environmental Protection (a) protection of the saltmarsh (b) monitor mitigation measures	(a) WFDG (b) Waldringfield Parish Council	a) WPC, DEP, EA, Drainage Board, AONB b) volunteer working party	(a) Important & urgent (b) Important & urgent
19	Other environmental matters (a) investigate energy initiatives (b) allotment provision	(a) New working party (b) WALGA	(a) WPC (b) WPC and interested residents	(a) Important & medium (b) Medium & medium
20	Telecommunications All actions	Waldringfield Parish Council	Volunteer working group with specialised knowledge	Important & urgent
21	Village Communication (a) publicise village website (b) discussions to improve Waldringfielders email group	a) Waldringfield Parish Council b) Waldringfield Parish Council	(a) n/a (b) owner of the email group plus volunteers	(a) Medium & low (b) Medium & medium
22	Local Democracy All actions	Waldringfield Parish Council	Special interest work groups	Important & ongoing



Appendix C - Glossary

AAP	Area Action Plan
ACORN	A segmentation tool which categorises the UK's population into demographic types
AONB	Area of Outstanding Natural Beauty
BT	British Telecom
DEP	Deben Estuary Partnership
EA	Environment Agency
HGV	Heavy Goods Vehicle
MP	Member of Parliament
NE	Natural England
PC	Parish Council
PO	Post Office
Ramsar	Ramsar sites are wetlands of international importance designated under the Ramsar Convention. The Ramsar Convention is named after the city of Ramsar in Iran, where the Convention was signed in 1971.
ROW	[Public] Right of Way
SCC	Suffolk County Council
SCDC	Suffolk Coastal District Council
SPA	Special Protection Area
SP 19	Policy SP19 in the District Council's Core Strategy. SP19 sets out the 'settlement hierarchy' within the district.
SP 20	Policy SP20 in the District Council's Core Strategy. SP20 covers the 'Eastern Ipswich Plan Area' within the district.
SSSI	Site of Special Scientific Interest
U3A	University of the Third Age
WALGA	Waldringfield Gardeners
WFDG	Waldringfield Flood Defence Group
WPC	Waldringfield Parish Council
WWG	Waldringfield Wildlife Group

Appendix D - Photo and Map Credits

CA:Colin Archer, CAS:Community Action Suffolk, TB:Tom Barton, SB:Stan Baston, AE:Andrew Excell, CFK:Christine Fisher Kay, CH:Cliff Hoppitt, SJ:Steve James, IK:Ian Kay, M:The Maybush, DM:Donna Morgan, AS:Alexis Smith, AV:Alyson Videlo, WGC:Waldringfield Golf Club, WSC:Waldringfield Sailing Club

Front (clockwise from top left) CFK, cover IK, AS, IK, SB, DM, DM, AV, (centre) CFK	p9 (from top) SB, IK	p17 (from top) AV, AS, AS, AS
Inside (Alphabetical order) WGC, IK, cover IK, IK, IK, CA, CFK, IK, AV, DM, AV, AV	p10 AV, AV	p18 (from top) AE, IK, IK
p2 (from top) IK, IK, AV	p11 IK, IK, IK	p19 (puddling) IK, (from top right) AS, IK, CFK
p3 (from top) AS, AV, AV	p12 (from top) WSC, TB	p20 AV, AV, AV
p4 (from top) CAS, CA	p13 IK, IK, IK	p22 IK
p6 CH/IK	p14 (from top) CFK, IK, AV	p24 AS
p7 AV	p15 (from top, right side) AV, CFK, CA, CA, (cricket) SJ	Back (clockwise from top left) AV, cover SB, AV, IK, AS, M, AV, IK, (centre) CFK
	p16 (coffee morning) IK, (harvest suppers) SB, AV, (art class) IK	

The maps on the inside cover and p20 are all © Crown Copyright and database rights 2015 OS 100055250 (with additions by IK). The map on p7 is from SCDC's Site Allocations and Area Specific Policies Issues & Options consultation (with additions by IK).

